

A scenic view of Fishers Peak State Park, featuring a large green overlay with white text. The background shows a rocky landscape with sparse trees and a distant mountain range under a cloudy sky. The green overlay covers the central portion of the image, and a white bar is at the bottom.

FISHERS PEAK STATE PARK
MASTER PLAN

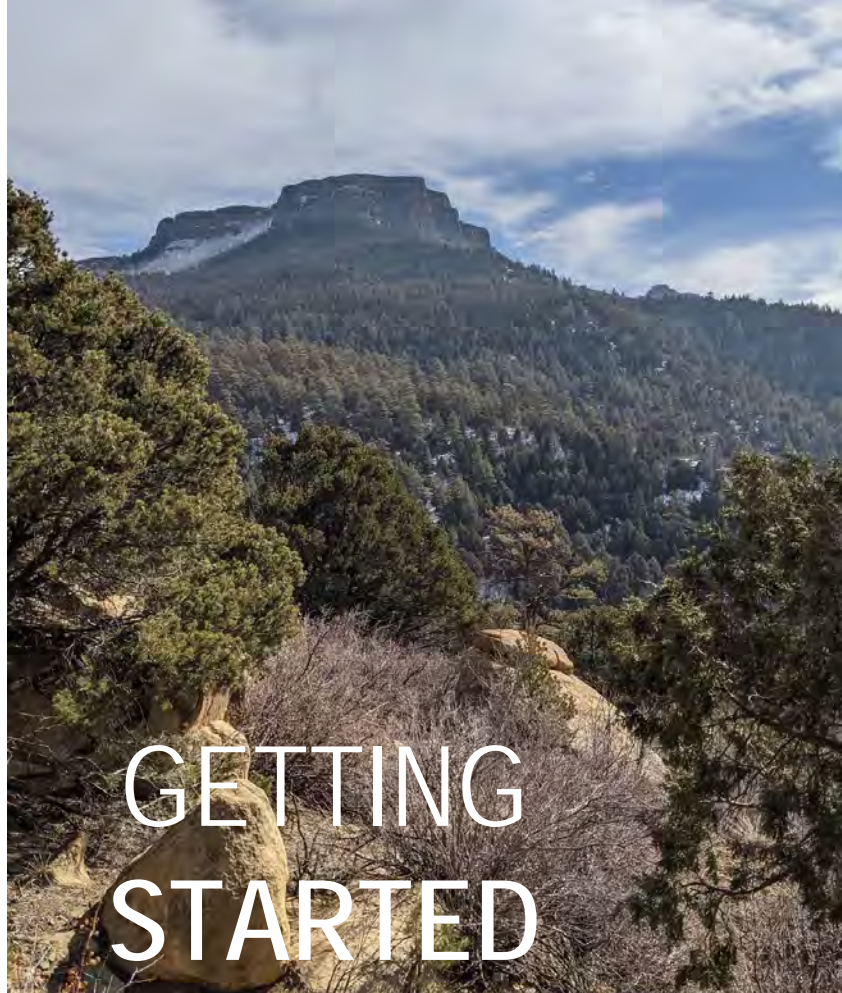
PUBLIC MEETING #2

June 24, 2021

MEETING GOALS

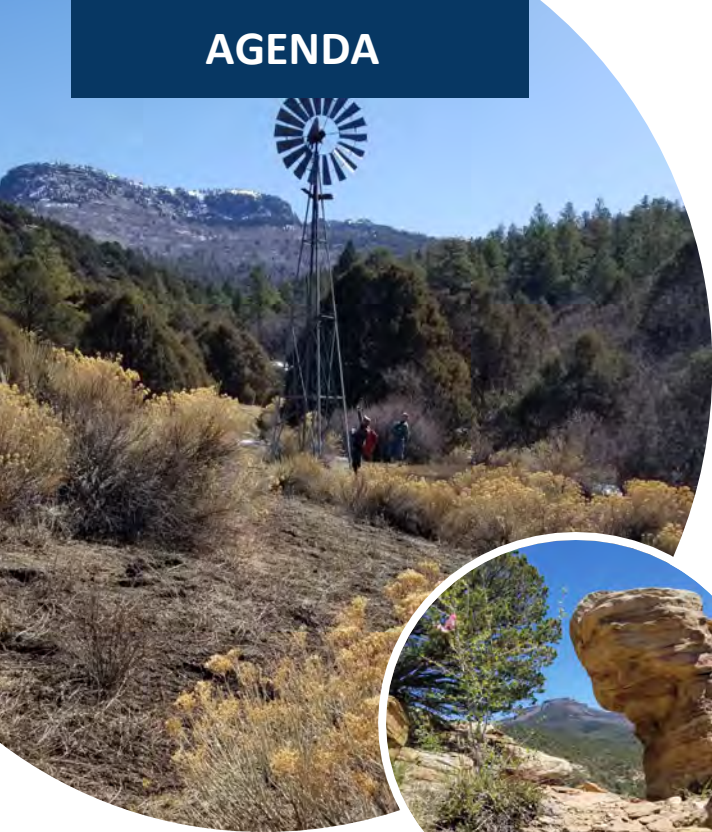
Today we plan to...

- Provide information and updates regarding the Fishers Peak Master Plan
- Gather feedback and input about specific aspects of the Park and Master Plan
- Answer questions and concerns related to Fishers Peak Park and the Master Plan process
- Connect with community members, statewide stakeholders, and regional stakeholders



GETTING
STARTED

AGENDA



Welcome

Process Recap & Review

On-Site Data Collection & Discussion

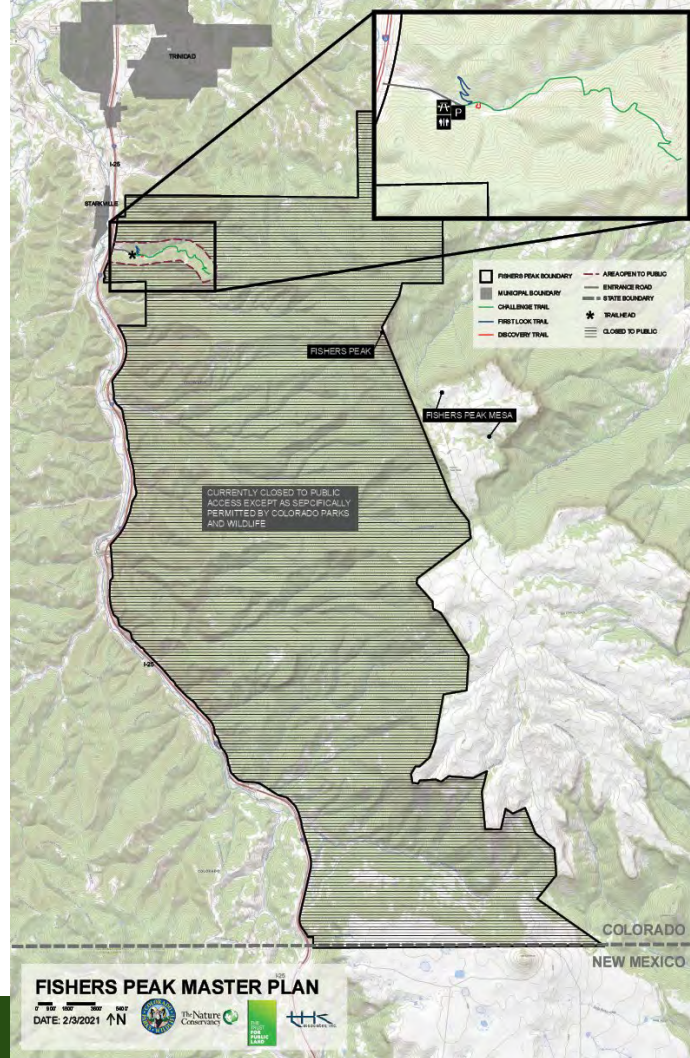
Public Engagement Input & Discussion

Wrap Up & Next Steps

A scenic landscape featuring a dark blue semi-transparent banner across the middle. The banner contains the text "RECAP & REVIEW" in white, bold, sans-serif font. The background shows a rocky foreground with sparse vegetation, a dense forest of evergreen trees, and a vast valley with distant mountains under a blue sky with scattered clouds.

RECAP & REVIEW

PARK MAP



FISHERS PEAK MASTER PLAN

DATE: 2/3/2021



VISION & FOCUS AREAS

VISION FOR PROPERTY

As it has for eons, Fishers Peak continues to provide for the life that thrives there and serves as a destination for those inspired by all that nature offers for generations to come



BLUEPRINT TO ACHIEVE VISION

Fishers Peak State Park offers a unique and synergistic blend of resource conservation, recreation, education, economic benefit, and cultural significance to the City of Trinidad, Las Animas County, and the State of Colorado.

VISION & FOCUS AREAS

FOCUS AREA 1: NATURAL SYSTEMS AND WILDLIFE ARE MAINTAINED, CONSERVED, AND PROTECTED

FOCUS AREA 2: NATURE-BASED OUTDOOR AND RECREATION ACTIVITIES ENHANCE THE VISITOR EXPERIENCE

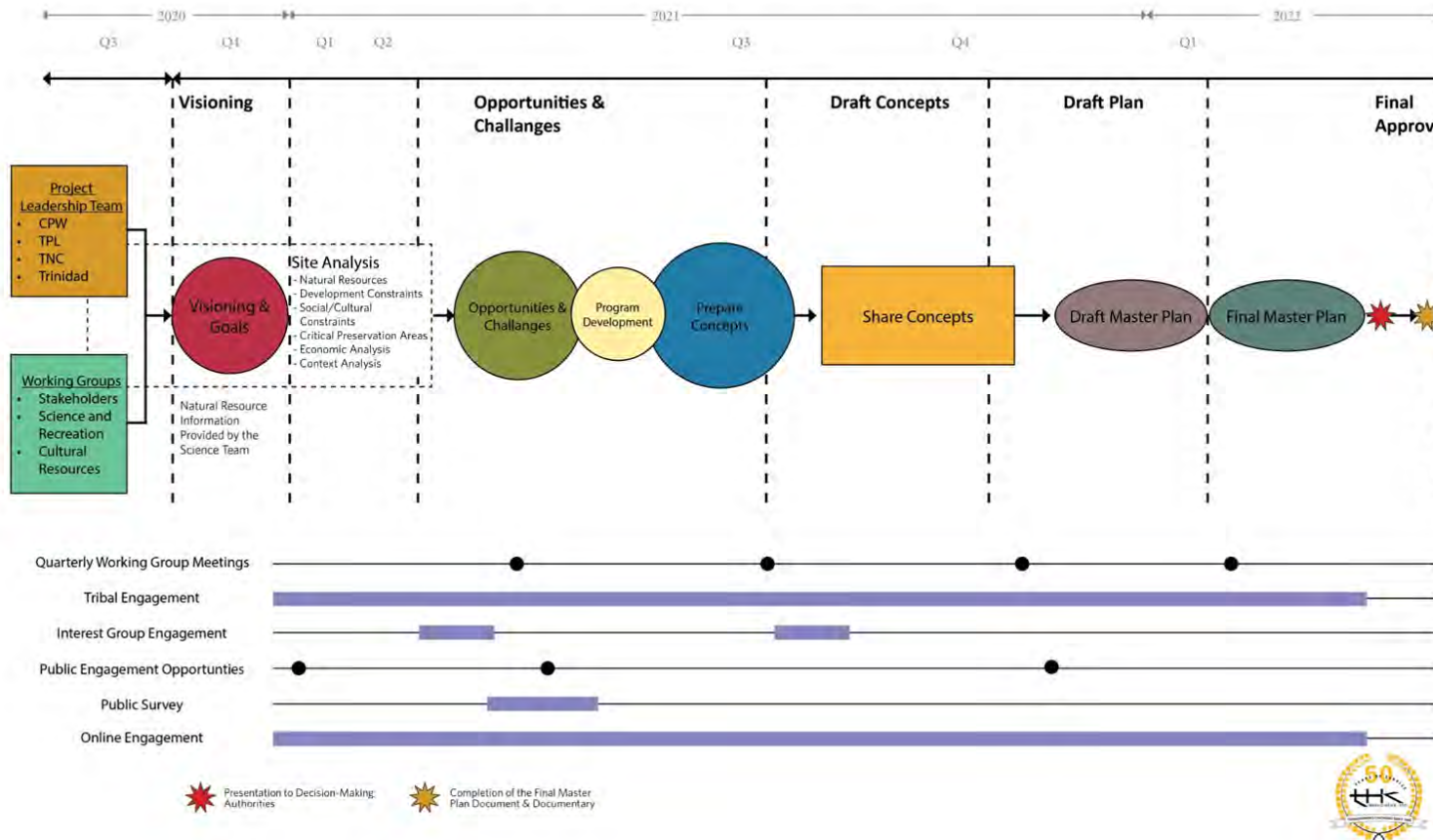
FOCUS AREA 3: THE PARK REMAINS A CULTURAL AND HISTORICAL RESOURCE

FOCUS AREA 4: OUTREACH AND EDUCATIONAL OPPORTUNITIES EXIST FOR ALL COLORADANS AND VISITORS

FOCUS AREA 5: ECONOMIC BENEFIT EXISTS IN THE CONTEXT OF THE QUALITIES AND CHARACTER OF THE LOCAL COMMUNITY

FOCUS AREA 6: PARTNERSHIP ALONG WITH PARK DEVELOPMENT AND OPERATIONS ADVANCE OBJECTIVES FROM ALL VISION FOCUS AREAS

Fishers Peak Master Plan Process



A scenic landscape featuring a dark blue semi-transparent banner across the middle. The banner contains the text "ON-SITE DATA COLLECTION" in white, bold, uppercase letters. The background shows a rocky foreground with sparse vegetation, a dense forest of evergreen trees, and a vast valley with rolling hills under a bright blue sky with scattered white clouds.

ON-SITE DATA COLLECTION

VIDEO

Thank you to the partners who provided video footage for today's presentation.



PLAY ON[®]



Research and Data Collection



*Pinyon – Juniper
Woodland*



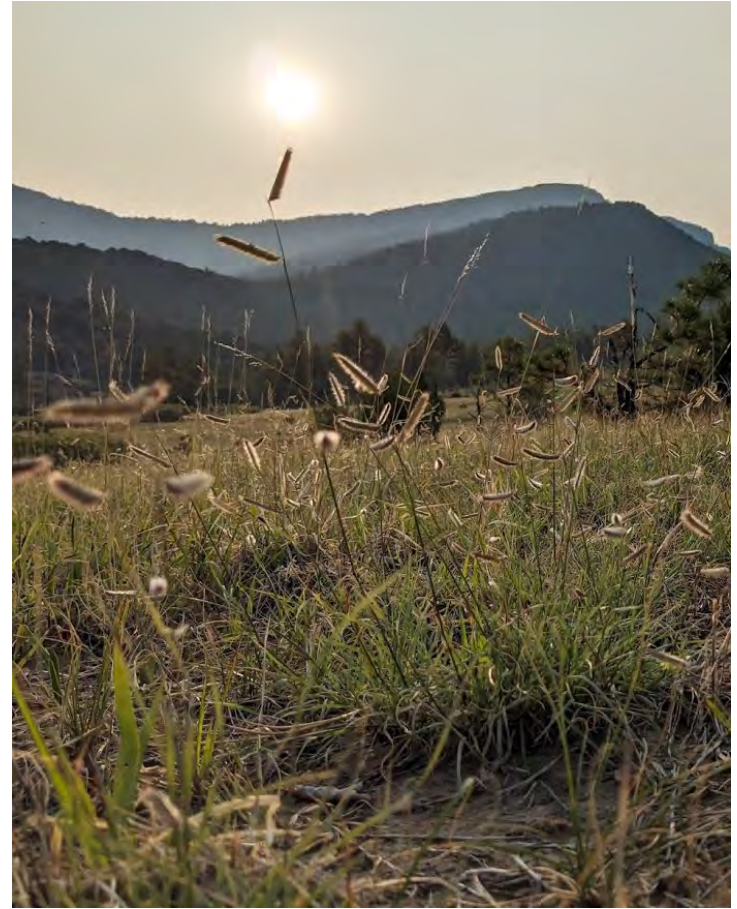
*Pinyon – Juniper
Woodland*



*Pinyon – Juniper
Woodland*



Meadows



Streams



Ponderosa Pine Forest



Rock Outcrops



Rock Outcrops



Mixed Forest



Mixed Forest



Montane Grassland



Upper Cliffs



Peak Summit



Existing Infrastructure



Existing Infrastructure



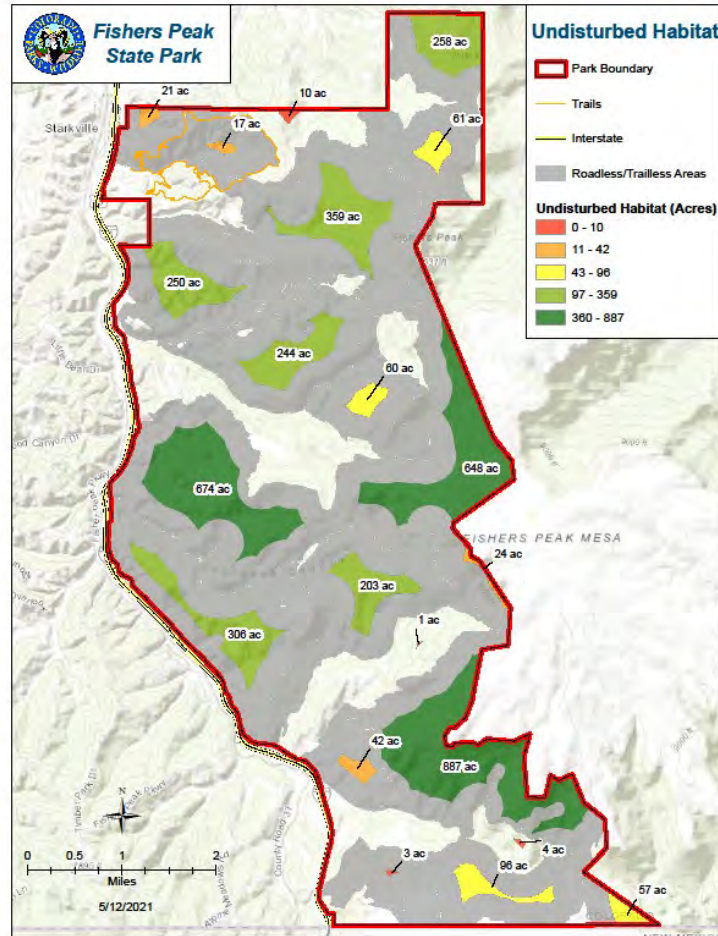
Existing Infrastructure



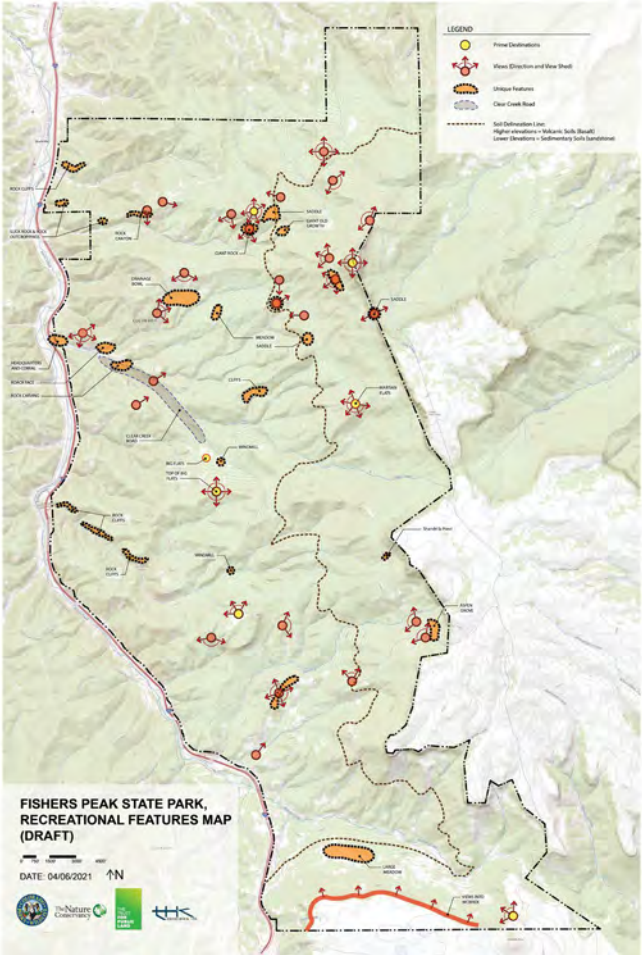
Existing Infrastructure

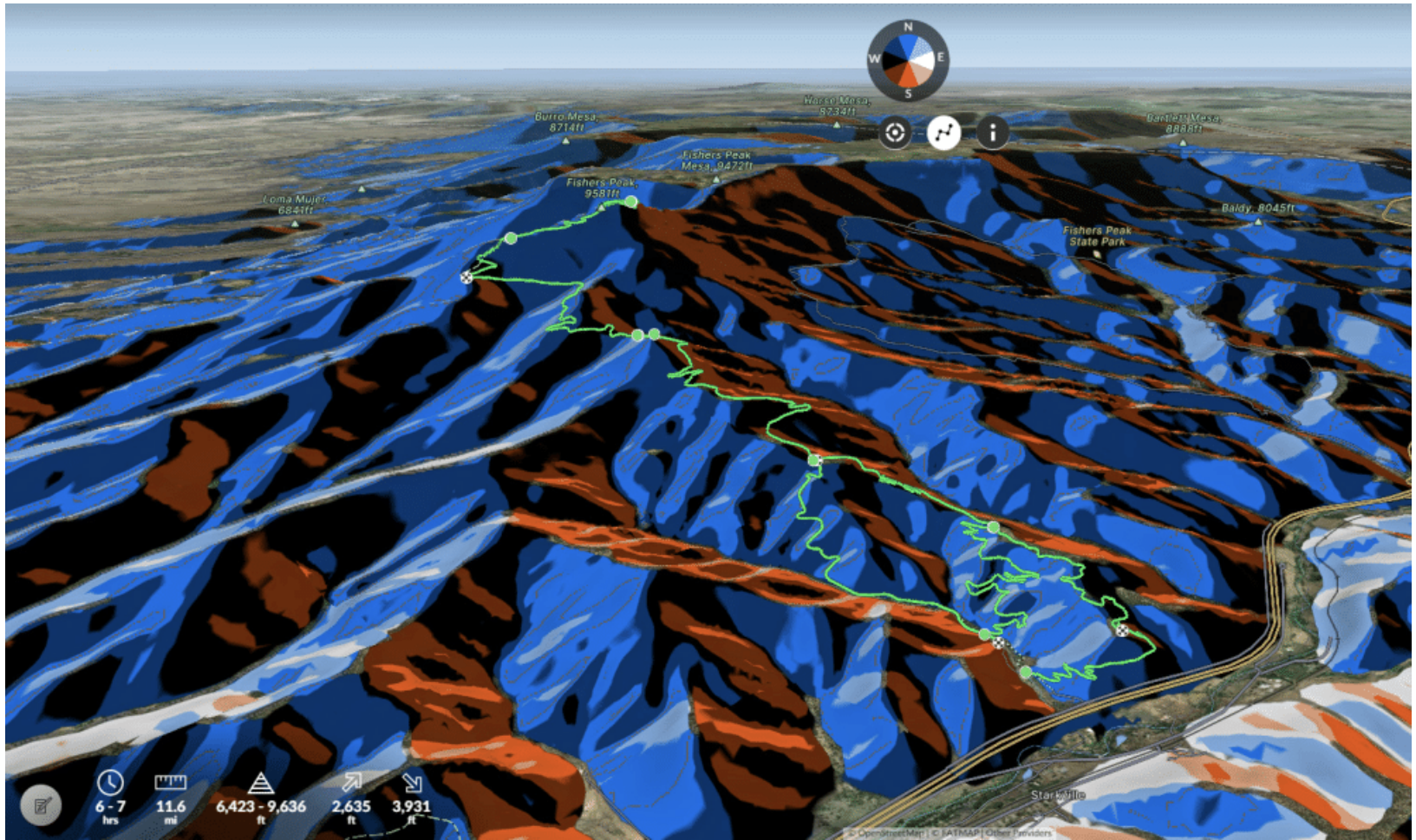


MAPS



MAPS






Activity: Input Gathering and Discussion

Polling Questions

- What does **backcountry recreation experience** mean to you? Do you have an example?
- What type of **front country infrastructure** is most important to you in order to enjoy this Park?

Mentimeter Link: <https://www.menti.com/szvygci8xx>



A scenic landscape featuring a dark blue semi-transparent overlay across the middle. The background shows a mountainous area with evergreen trees in the foreground and a valley with distant mountains under a blue sky with scattered clouds. The text 'Q&A' is centered in white on the overlay.

Q&A

A scenic landscape featuring a mix of green pine trees and brown, rocky terrain under a blue sky with scattered white clouds. A dark blue semi-transparent banner is overlaid horizontally across the center of the image, containing the text "PUBLIC INPUT" in white, bold, sans-serif capital letters.

PUBLIC INPUT

What We've Heard So Far by the Numbers

- **200+** public comments
- **350+** survey responses
- **2** public meetings
- **2** rounds of Work Groups
- **1** round of Interest Groups
- **1** round of Equity Review

How We're Using It

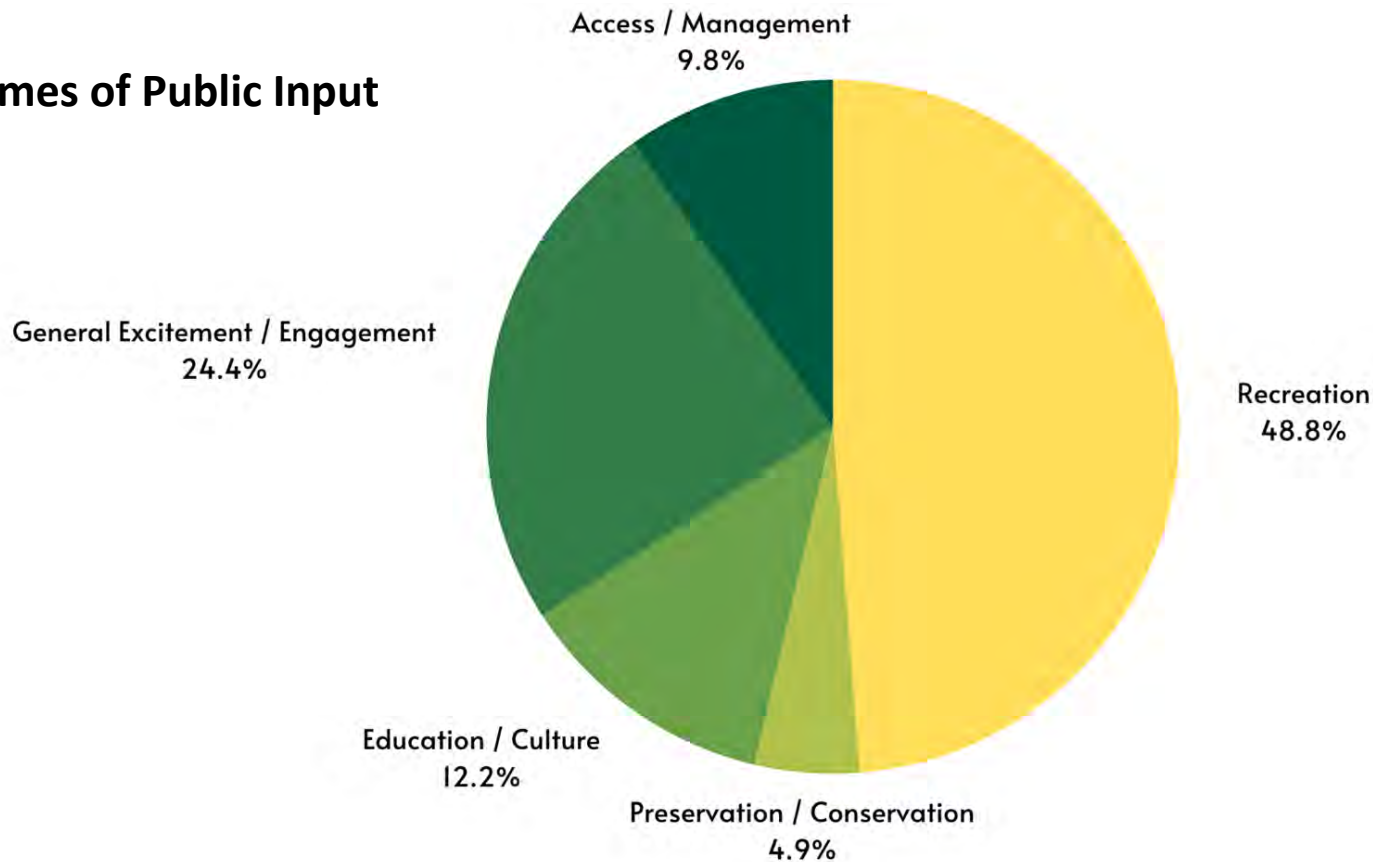
- Developing and refining Focus Areas and Objectives
- Criteria and concept considerations
- Informing trade offs and opportunities/challenges



What We've Heard So Far: Major Themes

- **Excitement and passion**
 - “Looking forward to this new treasure being opened.”
- **Preservation of resources: natural, cultural, historical**
 - “Let’s protect the biological diversity and cultural history of this park.”
 - “This is an invaluable resource which has remained largely intact for the last 10-15,000 years. Let’s be careful with it...”
- **Recreation opportunities that serve the land and the community**
 - “Please build facilities for [*insert recreational activity*]!”
- **Education and interpretive initiatives that tell the story of both the land and people**

Major Themes of Public Input



INTEREST GROUPS

Discussion Goals

- Solicit ideas related to opportunities/challenges and evaluation criteria
- Build relationships with key stakeholders

Over 100 sign ups leading to 15 Interest Groups:

Conservation / Environmental / Stewardship	Emergency Services
Wildlife / Hunting	Education and Interpretation
Outdoor Recreation	Diversity, Equity, and Inclusion
Mountain Biking	Local Businesses
Equestrian	Local and Regional: Colorado
Climbing	Local and Regional: New Mexico
Motorized Recreation	State and Federal Agencies
Grazing and Agriculture	



INTEREST GROUPS

Preparing Questions

- Questions were based on Vision Focus Areas
- Discussion focused on:
 - Evaluation criteria
 - Opportunities for reciprocity and partnership
 - Strategies for balancing stakeholder interests
 - Local and regional context
 - Opportunities and challenges
 - Best practices



INTEREST GROUPS

Opportunities

General appreciation to be engaged with the Master Plan	Opportunity for unique education, interpretation, and creative experiences
Emphasis on protecting natural resources and unique landscape of the Park	Desire for inclusive and equitable opportunities
Desire for varied types of recreation opportunities that do not significantly impact existing nature	Preservation and recognition of history and culture of the park (Tribes, grazing and ag)
Interest in unique experiences that aren't found elsewhere in the region (lookouts, wildlife viewing, challenging recreational trails, etc.)	Quality trails for easier maintenance
Importance of tying management and operations of the Park to the community (community economic benefit, and community opportunities to learn and give back)	Opportunities to Partner with Local, Regional and State Organizations and Agencies

Challenges

Recognition of the challenge of Park management and operations - opportunities to collaborate regionally (emergency services, businesses, volunteer groups, etc.)	Differing recreational interests and needs
Need for appropriate infrastructure and staffing to manage visitation and respond to community/visitor needs and interests (education/volunteer coordinator)	Community's desire for economic benefit may drive over-development of the Park
Landscape challenges and opportunities that may drive recreation and land use	Visitor Management Across State Park Lines

SAMPLING OF EVALUATION CRITERIA

1. **Are human impacts to the natural systems appropriate for/minimal enough to meet conservation goals?**
2. **Does the Park offer diverse recreation opportunities that can be used by many recreation interests and skill levels?**
3. **Are the recreation opportunities planned and developed in ways that preserve the cultural and historical heritage of the property?**
4. **Are there a variety of engagement opportunities for all users?**
5. **Does the messaging in the Park highlight the unique character of the surrounding communities?**
6. **Is the Park providing educational and stewardship (ie volunteer) opportunities?**


Activity: Input Gathering and Discussion

Discussion Questions

- Of the issues and interests we've heard thus-far from the public, what stands out to you as most important?
- What are we missing, if anything?

Mentimeter Link: <https://www.menti.com/szvygci8xx>



A scenic landscape featuring a dark blue semi-transparent overlay across the middle. The background shows a mountainous area with evergreen trees in the foreground and a valley with distant mountains under a blue sky with scattered clouds. The text 'Q&A' is centered in white on the overlay.

Q&A

A scenic landscape featuring a dark blue semi-transparent banner across the middle. The banner contains the text "THANK YOU!" in white, bold, sans-serif font. The background shows a rocky foreground with sparse vegetation, a dense forest of evergreen trees, and a vast valley with rolling hills under a bright blue sky with scattered white clouds.

THANK YOU!